

Geophysics lab

“The Seismic lab of the Department of Geosciences is the heart of the institute, where strange looking lines and colors gets transformed into ancient seafloors, reservoirs and glacial remnants... It is where geophysical interest is made...”



The Seismic lab has 11 high performance computers loaded with high graphic capacity, and top performing processors. The institute has licenses for several of the market leading software packages for processing and interpretation of geophysical data (see figure below). The students gets hands on knowledge to industry software.

Examples of images created in the seismics lab



Example of seismic profile.

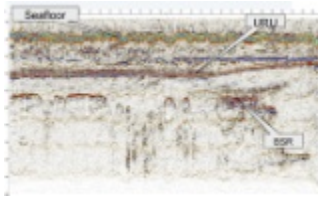
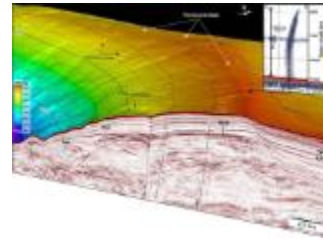
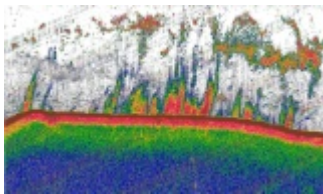


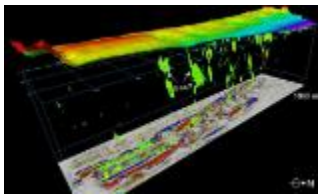
Image acquired by P-Cable 3D-seismics.



Example with pockmark fields.



Gas bubbles rising from Vestnesa Ridge, NW Svalbard.



3D-seismic image with possible gas deposits.

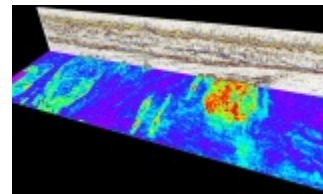
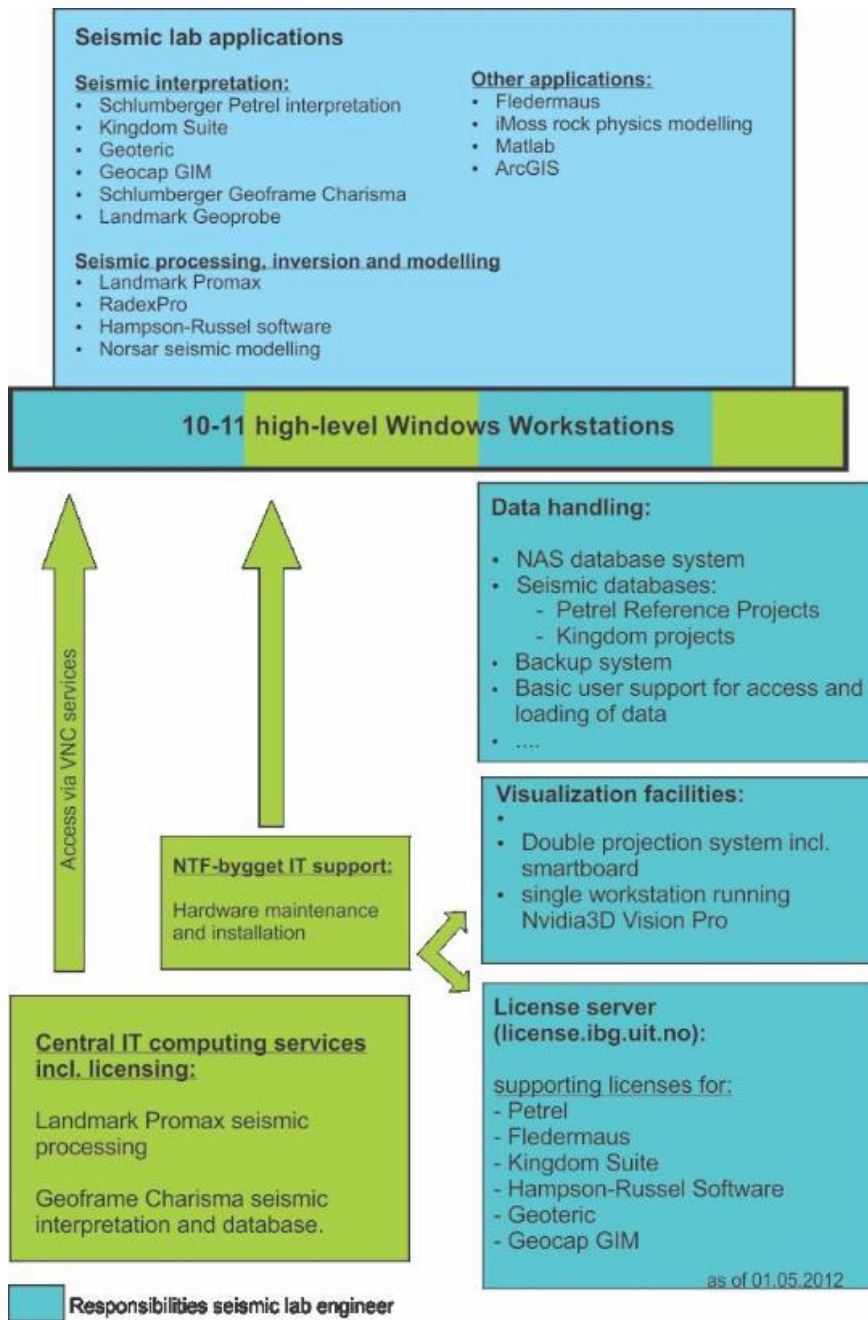


Image showing gas trap.



Hardware and software content of the seismics lab

Contact persons for lab:

- [Stefan Buenz](#)
- [Iver Martens](#)