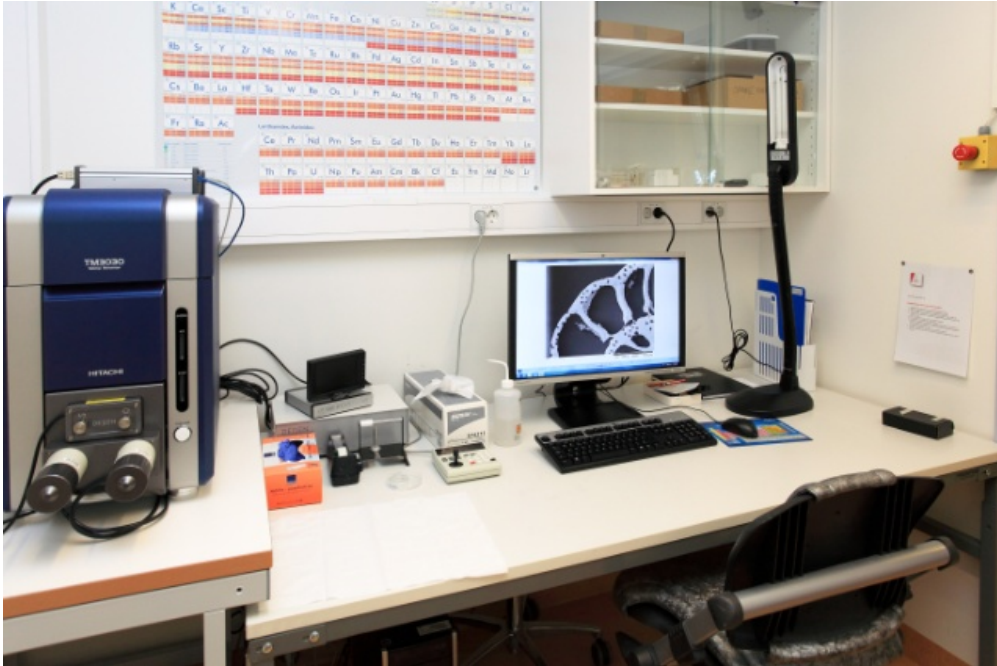


SEM Tabletop

The scanning electron microscope (SEM) is particularly useful to observe minute (or microscopic) solid specimens and generate high-resolution images of shapes of objects and to show spatial variations in chemical compositions.



SEM Tabletop

Applications:

- acquire high quality, high resolution images (magnification 15 – 30 000 x)
- acquire elemental maps, spot and line profile chemical analyses with EDS (Energy-Dispersive X-Ray Spectroscopy)
- compositional imaging where different brightness levels represent different composition
- topographic details

The SEM is endowed with Tilt & Rotate stage.

CAGE ([Centre for Arctic Gas Hydrate, Environment and Climate](#)) has contributed to the procurement of the instrument.



Contact persons for lab:

- [Trine Dahl](#)
- [Giuliana Panieri](#)