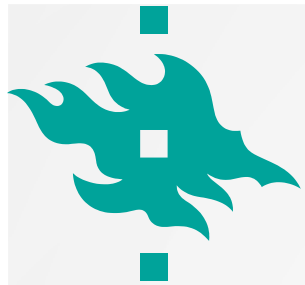




POSTABORTAL CONTRACEPTION – WHEN TO START?

WHO: Safe abortion 2012

Method	Surgical abortion	Medical abortion
Oral contraceptives	Immediately	Immediately
Implants / injectables	Immediately	Immediately
IUD	Immediately	When complete abortion is confirmed



RISK FACTORS OF SUBSEQUENT ABORTION

Heikinheimo ym., Contraception 2008, Niinimäki et al., Obstet Gynecol 2009,
Mentula et al., Am J Obst Gyn 2010

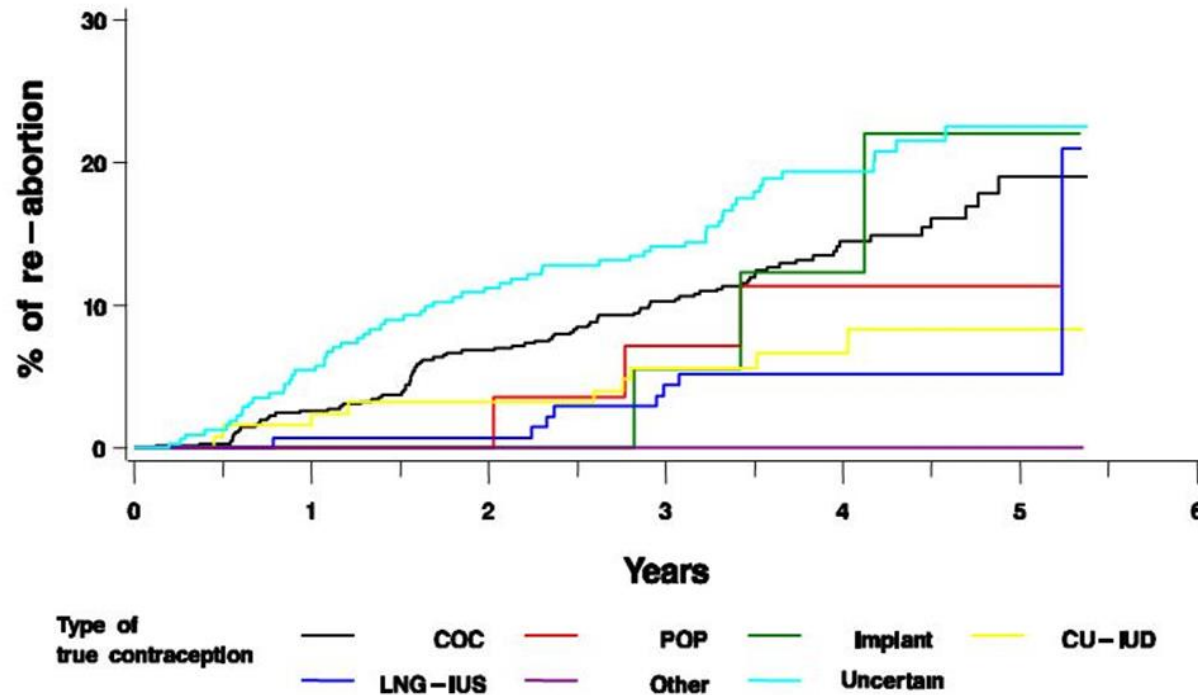
- Young age
- Parity
- Smoking
- Previous (second trimester) abortion

- Contraceptive choice
 - Intrauterine contraception ↓
 - Delayed initiation of contraception ↑



CONTRACEPTIVE METHOD AND THE RISK OF RE-ABORTION

Fig 4





SUMMARY

- LARCs are preferable, IUD most effective
 - Early or even immediate insertion is safe
- Early initiation of contraception crucial
 - Quick recovery of ovaries
 - Better compliance → higher usage
- The fewer the additional visits, the better
- Provision of contraception as a part of abortion services?